
Installation Instructions 2G



AMORIM WISE

Installation Instructions

2G



(Preparation)

Subfloor requirements

Please inspect the planks in daylight for any visible faults or damage. Also check if the subfloor and site conditions are in accordance with the specifications described within these instructions. Amorim Wise can be installed in all domestic areas and in most commercial areas, except in saunas and permanent wet areas. All types of sub-floors, must be even, flat and level, dry, variations should not exceed 5mm in 2m (0.20" in 6.6 feet). It is possible to use Amorim Wise in other areas like bathrooms, or areas where spillages frequently occur since it will not swell when exposed to water. However, in order to prevent the water to penetrate under the installed floor (which can create conditions for growing of fungus, mold or smell), a polyurethane sealant must be applied on expansion joints. Amorim floors are suitable for indoor use only. Amorim Wise can be installed on top of most hard surfaces such as resilient floor coverings and ceramic tiles which are sufficiently fixed, completely levelled and have no loose areas. Soft subfloors such as carpets and similar must be removed. For Amorim Wise installation no underlay is required.

Radiant-Heated Subfloors

Amorim WISE floating floors can be laid in combination with floor heating and/or cooling systems. For the heating or cooling systems follow the instructions supplied by the system manufacturer/contractor, or contact your supplier. To avoid problems with functioning and durability during the construction phase, follow the norms and rules concerning installation.

Very important for subfloor heating systems, please take in account that the drying of a heated subfloor has to be made by turning the heating on/off with a pause before installation of the floor. After that you can begin the "heating phase".

The beginning of the heating phase in concrete subfloors is to be made not before 21 days after complete curing of the substrate. The heating phase has to begin with running temperature of 25°C (78°F) during 3 days. The subfloor should be in place and cured for at least 60-90 days. The temperature should then be increased each day until the maximum temperature allowed according to the manufacturer system. This maximum value should be kept for at least 72 hours and maintained for 5-7 days without turning it off. The decrease of temperature is made by reducing it gradually every day until 18°C (65°F) on the surface is achieved. During the installation, the temperature of the surface should not be less than 18°C (65°F) and should be kept for 3 days after finishing the installation (for floating floors). Then the temperature should be increased slowly to a max. of 28°C (82°F) on the subfloor surface. Remember that rugs or mats placed on top of the floor may function as heat accumulators and will increase the floor surface temperature. Maximum floor surface temperature should not exceed 25°C (78°F).

Very important for cooling systems that floor cooling systems must be equipped with an advanced control and safety system to prevent internal condensation (dew point regulation). To avoid damage to the floor, the supply temperature of the cooling system must not be reduced below a certain temperature, the so called dew point temperature. Lower temperatures will produce condensation in the floor and damage the floor covering (e.g. warping, distortion, swelling, gapping). For both heating and cooling systems, make sure that the relative air humidity in the rooms during the heating or cooling season is between 35% to 65% and the temperature the subfloor (temperature underneath of the floor) between 18-28°C (65°F-82°F).

Amorim Wise on wooden floor / chipboard / OSB.

In case of installation on a wooden subfloor, please remove any existing floor covering first. No signs of mould and/or insect infestations should be visible.

Make sure that the plywood and OSB subfloor are mechanically fixed (screw), make sure that they are stable and show no movement anytime and at the same time the joints between the panels are even and firmly closed.

Existing laminate flooring, wood planks or engineered wood planks must be free of tensions. If there are any visible open seams and/ or height differences between panels than needs to be entirely removed.

Existing wood planks, engineered wood boards, OSB panels, drywall elements etc. must not be covered with PE foil acting as a vapour barrier. The area below the floor should also be sufficiently ventilated in an adequate way (back-vented skirting board) to maintain the equilibrium moisture content of the wood planks, engineered wood boards, OSB panels, drywall elements. The crawl space under the wooden subfloor must be sufficiently ventilated. Remove any obstacles from the crawl space and make sure there is sufficient ventilation (minimum 4cm² (0.62" ²) total ventilation openings per 1m² (3sqft) of flooring). The moisture content of the wood must not exceed 10%.

Amorim Wise on ceramic tile floors

The maximum joint should not be wider than 2mm (0.08"), and 1mm (0.04") depth. If this is not the case, or if there is any kind of embossing, skim coat the grout lines with a floor leveller.



(Prior to installation)

Transport, storage and acclimatization

Transport and store the cartons horizontally.

Packed tiles should be acclimatized at the job site in a dry, well-ventilated area for a minimum of 24 hours so that flooring may acclimate.

Remove tiles from packages just before starting the installation.

During storage and installation, maintain temperature and relative humidity to a level consistent with the conditions which will prevail when the building is occupied. In most cases, this means maintaining a temperature range from 18°C to 28°C (65°F to 82°F) and relative humidity range from 35% to 65%. In order to reach this climate, use heating or air conditioning in the appropriate duration of time before starting the installation.

Amorim shade variation is an inherent and attractive characteristic. To achieve the most pleasant blend of shades, shuffle the planks before installation.

Site inspection

Prior to installation, please inspect the tiles in daylight for any visible faults or damage, and also check if the subfloor and site conditions are in accordance with the specifications described within these instructions.

Amorim Cork Flooring cannot be held responsible for claims associated with improper subfloors, improper applications, adhesives, varnishes and the use of maintenance products not recommended, or detectable defects verifiable prior to installation.

Expansion Gaps:

Amorim floating floors are installed as a "floating floors", so the planks should not be fixed to the subfloor. The skirting boards/mouldings cannot be pressed down, not restricting the movement of the floor. Also provide 5mm (0.2") expansion gaps to the walls and other fixed objects. Do not install any permanent and heavy structures like kitchen islands or cabinets on top of Floating floors. Skirting boards/mouldings should cover minimum 7mm (0.28") of the floor. Transitions between two rooms and asymmetrical floor areas require extra expansion gaps in floor areas superior to 325m² (3500sq ft) or with dimensions bigger than 18m (60 feet) in either direction. These requirements can be avoided, if Amorim Wise is installed as a glue down (see glue down installation instructions).



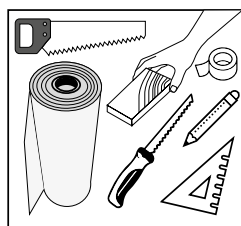
(During installation)

Installation with excessive heat or direct sunlight

Amorim Wise should be protected from heat and sunlight by the use of curtains and/ or blinds. In areas which will be exposed to excessive heat (≥ 45 °C /110 °F) or direct sunlight the whole area must be glued to the subfloor with the use of an approved adhesive (check our glue recommendation list).

Floating areas and glued areas must be separated by transition profiles.

Tools required



Tape measure, craft knife, pencil, straight edge, chalk line, white rubber hammer

Moisture Protection

Despite its age, there is always a risk of moisture in subfloors, so it is necessary to measure and keep recorders of the moisture content of the subfloor.

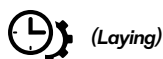
On concrete subfloors without radiant heat, consider the maximum humidity less than 75% RH or conduct calcium chloride moisture tests to ensure that moisture emission levels are less than 3 lbs/1000ft²/24 hours (USA and Canada), or CM Test:

| Type of Subfloor | Moisture content CM% Heated | Non-heated |
|------------------|-----------------------------|------------|
| Concrete | 1,5 | 2,0 |
| Anhydrite | 0,3 | 0,5 |

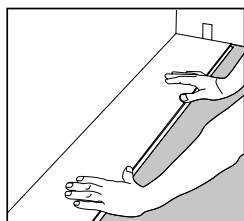
Amorim Wise should not be installed where excessive moisture emissions may exist, in accordance with applicable standards. When it is installed on concrete, ceramics or stone subfloors and effective moisture damp proof membrane should be used.

Installation Instructions

2G

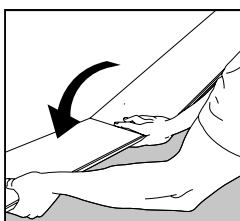


On wooden floors, we recommend laying Amorim Wise floors crossways to the existing floorboard. Amorim Wise floors locking system are easy to install. We recommend to start installation in the right-hand corner.



1

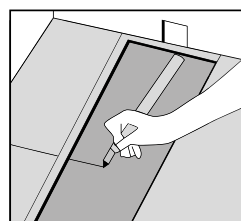
Turn the tongue side of the plank facing the wall. Maintain a gap of 5mm (0.2") on the short side.



2

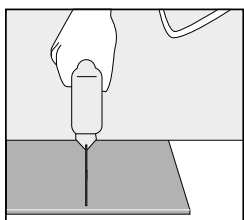
Hold the next plank against the first at an angle to the first one and lay it flat on the floor.

Complete the first row in the same way.



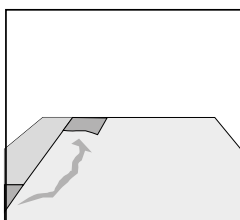
3

Cut the final plank of the first row to the correct length. Place the final plank face down and the short side without the locking strip towards the wall. The distance to the wall should be 5mm (0.2").



4

Mark where the plank is to be cut and place it on the work surface and cut to size using any kind of saw.



5

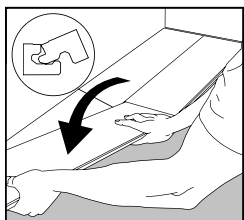
Make sure that the long sides of the planks make a straight line. Use the cut piece of the plank from the previous row to start the next one. However it must be at least 30cm (12") long. If the piece is too short, start with a new board and cut it in half. Always ensure that the end joints are staggered at least 30cm (12").



6

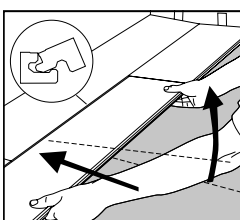
Place the first plank of the new row with the tongue side at an angle against the groove side of the plank in the previous row.

Press forward and lay it flat at the same time.



7

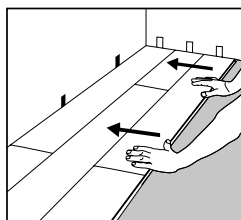
Place the short end of the plank at an angle against the previous installed plank and fold down. Ensure that the plank is positioned on the integral locking strip of the plank in the previous row.



8

Lift the plank (together with the previous one laid in the same row) slightly up (about 30mm (1.2")), push it against the row in front and then put it down.

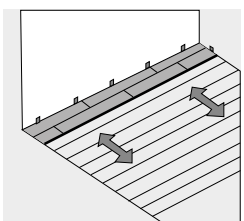
Tip: This movement requires some gentle adjustments on the pressing angle.



9

Adjust the distance to the wall to 5mm (0.2") when three rows are complete.

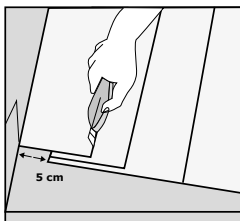
(Remaining Rows)



10

Proceed the installation as described above until reaching the opposite wall.

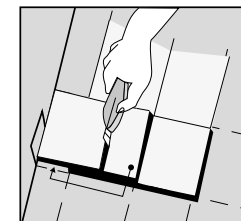
(Last Row)



11

Measure and cut the planks in the last row to the correct size.

Allow for a 5mm (0.2") distance to the wall. No plank should be less than 5cm (2") wide.



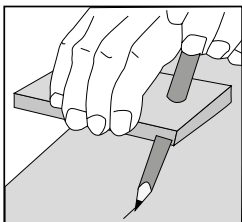
12

The last and first plank can be cut in the correct width. Place the last plank on top the second to last plank. Mark the plank with the help of a piece of plank without locking the strip. Allow for 5mm (0.2") distance to the wall for the expansion gap.

Installation Instructions

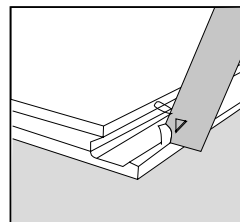
2G

(Uneven walls)



Sometimes the first row must be cut to match an uneven wall. Transfer the shape of the wall to the planks. Do not forget to allow 5mm (0.2") to 10mm (0.4") for the expansion gap. The width of the first row of planks should be equal or bigger than 5cm (2").

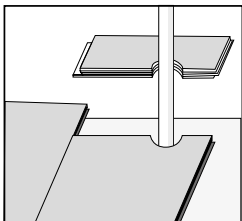
(Installation around doors, radiators and last row)



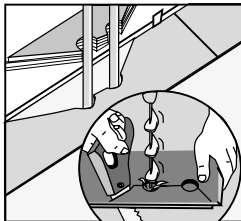
If you cannot angle the tile under the door frame or a low fitted radiator cut away the locking edge and apply glue (PVA D3 or Supper glue) on the groove and slide the plank in to the right position.

(Heating Pipes)

Sometimes the first row must be cut to match an uneven wall.

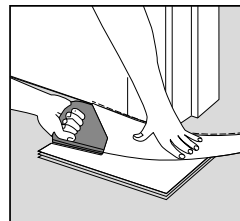


Drill the required holes in the planks, making a hole on the plank 10mm (0.4") bigger than the pipe diameter.



Cut the plank with a 45° angle towards the hole. The cut-off piece is glued in the position again. Cover the hole with a pipe sleeve.

(Door frames)



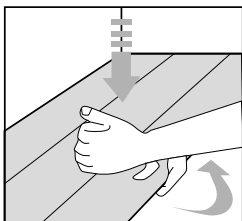
If a door frame needs to be cut, use a piece of plank to obtain the correct height.

Saw the door frame and architrave to the required height allowing for 2mm (0.08") of space to the planks.

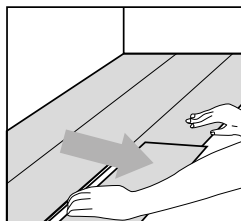
The planks can be laid from all directions. This makes easier to plan the installation e.g. around doors.

(After installation)

Removing the floor



To uninstall the floor, lift the planks (long side) a few centimetres and then slide the planks on the short side.



Do not bend connected planks backwards as this will damage it.

rev.01

WARRANTY

We take pride in designing each of our products with the goal of providing the best flooring for your needs. In addition, we use the highest quality components and quality control techniques to ensure the reliability and long life of our products.

No installer, dealer, agent or employee has the authority to alter the terms and conditions of this Warranty.

IMPORTANT: This Wicanders Warranty is applicable only if the Wicanders Installation and Maintenance instructions, which are part of the flooring packaging and the packaging for our auxiliary (adhesives, maintenance & cleaning) products and which in any case can be found in our website www.wicanders.com, are respected.

In case there are any questions, contact us at: quality.system.acf@amorim.com

1. QUALITY STANDARDS WARRANTY

We warrant that at time of delivery each of our flooring products meets the applicable Quality Standards, as follows:

- SPC Floating: ISO 10582, EN 14085.

2. EXTENDED WARRANTY (STRUCTURAL AND WEAR)

Whenever our products are supplied as new and through approved outlets, we warrant that within the applicable period (after invoice date) indicated in the table below: (i) our flooring products shall be free of manufacturing defects and (ii) their Surface Wear

Layer will not wear. "Will not wear" is defined as the 100% reduction of the Surface Wear Layer over an area comprising 5% of the total Surface Flooring installed.



3. EXTENDED WARRANTY COVERAGE

In the unlikely event that any of our products fail to perform according to the applicable warranty, we will, at our option, repair, refinish or replace such product with the same product or another one of equal value (at our selection), or refund the purchase price paid (if replacement or repair is not practical or cannot be made on a timely basis), as more specifically described below.

A) During the first five (5) years of this Warranty (i) the defective flooring products will be replaced, (ii) the defective products will be removed and (iii) the replacement products will be installed, AT NO COST TO YOU or, at our option, provide a refund.

B) After the initial five (5) years period (if applicable), we shall only provide all or part of the flooring products for replacement, according to the lifetime usage table below:

| Period (years) | Warranty coverage |
|----------------|--|
| 0-5 | 100% of the Flooring Products for replacement + costs of removal and installation |
| 6-10 | 75% of floor products are replaced (without dismantling and installation costs) |
| 11-20 | 50% of the Flooring Products for replacement (without costs of removal and installation) |
| 21-25 | 25% of the Flooring Products for replacement (without costs of removal and installation) |

4. EXCEPTIONS

This Warranty shall not apply in any of the following cases:

- 4.1. Installation not made according to procedures and without using the approved auxiliary products or improper or not recommended refurbishment (in each case as set forth in the Wicanders Installation and Maintenance instructions).
- 4.2. Improper subfloor patch, underlayments, or subfloors (please consult Wicanders Installation and Maintenance instructions).
- 4.3. Incorrect product choice for the flooring use or site conditions (please consult Wicanders Installation and Maintenance instructions).
- 4.4. Improper maintenance or use of unapproved auxiliary products (please consult Wicanders Installation and Maintenance instructions).
- 4.5. Products modified or repaired with products or methods of installation or repair not specifically recommended in the Wicanders Installation and Maintenance instructions or not specifically authorized by the manufacturer.
- 4.6. Extreme environmental conditions, meaning exposure to extreme heat, moisture or dryness (more than 65%, less than 35% R.H).

Installation Instructions

2G - SPC

- 4.7. Gloss change or loss is not considered surface wear.
- 4.8. Trivial or insubstantial visual defects, i.e., visual defects not perceptible at 1,5mt standup or only perceptible in counter light, are not covered by this Warranty.
- 4.9. Office roller chairs must comply with EN 12529 (Type W). Use protective office mats under the rolling chairs.
- 4.10. Gaps on floating floors (> 0,20mm EN 14085) existing at the time of installation.
- 4.11. High commercial (Class 34) or industrial (Class 42) areas (although ISO 10874 classification allows it), will not be covered by this Warranty.
- 4.12. Wicanders product lines not specifically mentioned in paragraph 1. of this Warranty or any flooring products sold as "second choice".
- 4.13. Accidents, abuse, misuse, force majeure, damage from heavy furniture or equipment used without sufficient protection, impact damage, hydrostatic pressure, scars from sharp or pointed objects, cuts, tears, scuffs, scratches, misuse, negligence, burns (cigars, candles, etc), water, erosion, spiked heel shoes, pet claws, pebbles, sand or other abrasives.
- 4.14. Detectable defects verifiable prior to installation.
- 4.15. Difference in shade or color. Our flooring products are based on natural materials. We do not warrant any difference in shade or color between samples/photographs and the actual flooring, 1) from batch to batch, 2) due to exposure to sunlight, 3) resulting from replacement of a portion of your floor, 4) resulting from the different age and history of the same product reference/batch.
- 4.16. Squeaking in cork floors. Squeaking can be caused by several reasons: variations in relative humidity; subfloor not perfectly levelled; underlays or other type of "barriers" / layers below the flooring; Etc.

5. CONDITIONS

This Warranty:

- 1) Is valid from the date of purchase (invoice date).**
- 2) Applies only to flooring products in their original installation location.**
- 3) This warranty is applicable to products sold to the first end consumer and is not transferable**
- 4) Shall expire if the product or installation location is transferred or re-sold.**
- 5) For all products, it applies only if the care and maintenance instructions are strictly followed.**
- 6) Applies to flooring used exclusively in interior residential and commercial applications that are submitted to normal traffic, excluding wet or damp areas such as bathrooms or saunas.**

THIS IS A LIMITED WARRANTY. EXCEPT AS PROVIDED HEREIN, WE MAKE NO WARRANTIES, EXPRESS OR IMPLIED, WITH RESPECT TO THE PRODUCTS, INCLUDING ANY WARRANTY OF MERCHANTABILITY OR FITNESS FOR A PARTICULAR PURPOSE. OTHER THAN AS EXPRESSLY PROVIDED HEREIN, UNDER NO CIRCUMSTANCES SHALL WE BE LIABLE TO THE END-USER/PURCHASER OF OUR PRODUCTS OR ANY OTHER THIRD PERSON FOR ANY DIRECT OR INDIRECT DAMAGES (WHETHER CONSEQUENTIAL, INCIDENTAL, SPECIAL OR OTHERWISE, INCLUDING WITHOUT LIMITATION, LOST PROFITS) ARISING OUT OF ANY DEFECT IN OUR PRODUCTS.

This Limited Warranty gives you specific rights but does not affect any rights of any end user/purchaser provided by law. You may also have other rights under the law, which vary from Country to Country or State to State. Some countries do not allow the exclusion or limitation of implied warranties or of incidental or consequential damages, so the above limitations or exclusions may not apply to you.

6. IF YOU HAVE A PROBLEM

In the unlikely case that you detect a problem with your flooring product, please take the following steps:

- 6.1. Promptly upon such detection, provide your supplier with written notice of the problem, proof of the purchase date, type and grade of the defective products and amount of flooring involved. Please document your communication and keep the information on file until your problem is resolved.
- 6.2. If you are not satisfied with your supplier recommendation, an authorized representative must inspect and verify the defect. We reserve the right to designate a representative to inspect the floor and remove samples for analysis. If such defect is verified, and confirmed by an authorized representative, we will proceed as described in point 2.
- 6.3. If your supplier is unable to solve the problem, contact quality.system.acf@amorim.com